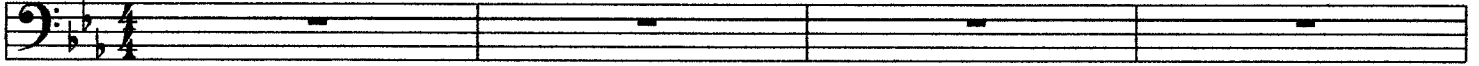


TROMBONE

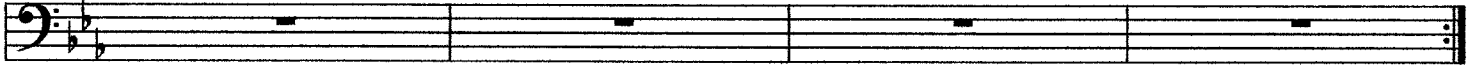
HOT COFFEE

fast swing

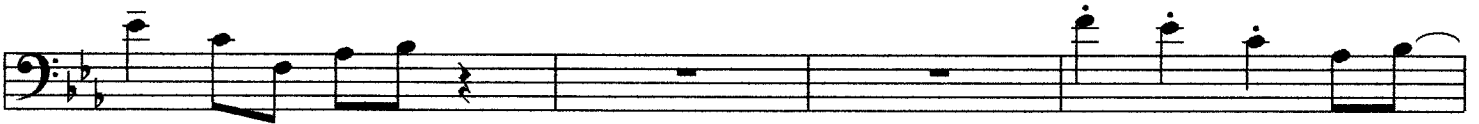
Cm^{11}



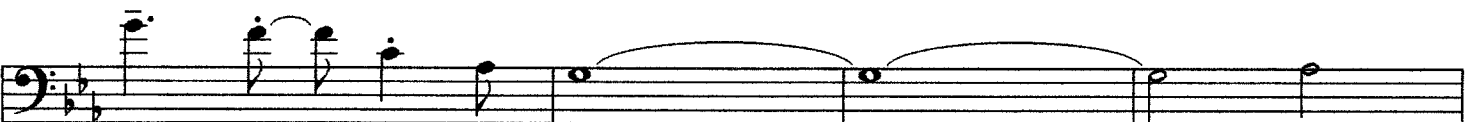
$\text{B}^{\flat}\text{m}^{11}$



A



B

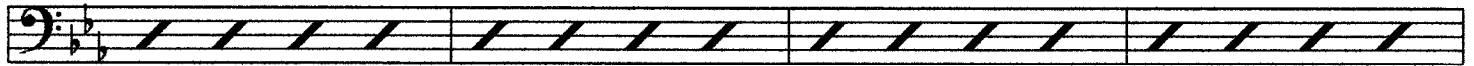


SOLOS: Cm¹¹



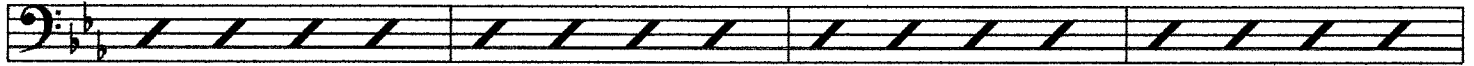
A musical staff in bass clef with a key signature of two flats (Bb, Eb) and a common time signature. The staff contains four measures of diagonal slash marks, indicating a solo section.

Bbm¹¹



A musical staff in bass clef with a key signature of two flats (Bb, Eb) and a common time signature. The staff contains four measures of diagonal slash marks, indicating a solo section.

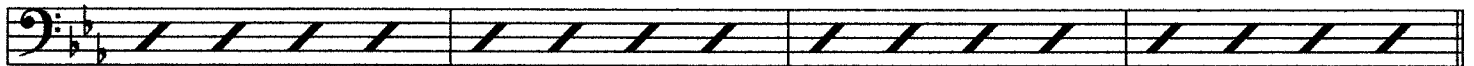
Cm¹¹



A musical staff in bass clef with a key signature of two flats (Bb, Eb) and a common time signature. The staff contains four measures of diagonal slash marks, indicating a solo section.

Ebm⁷

A⁷



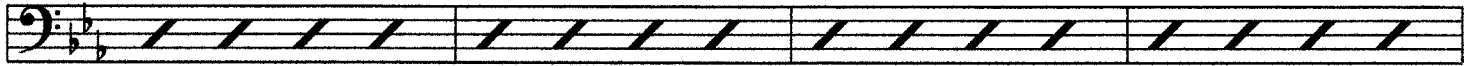
A musical staff in bass clef with a key signature of two flats (Bb, Eb) and a common time signature. The staff contains four measures of diagonal slash marks, indicating a solo section.

Dbmaj⁷

Cm⁷

Bbm⁷

A⁷ sus

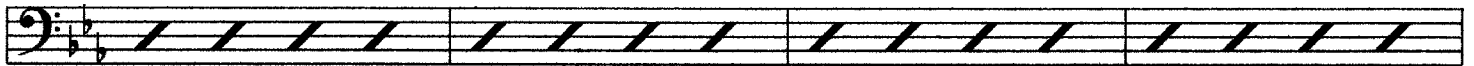


A musical staff in bass clef with a key signature of two flats (Bb, Eb) and a common time signature. The staff contains four measures of diagonal slash marks, indicating a solo section.

Gbmaj⁷

Gm5b⁷

1. C⁷



A musical staff in bass clef with a key signature of two flats (Bb, Eb) and a common time signature. The staff contains four measures of diagonal slash marks, indicating a solo section.

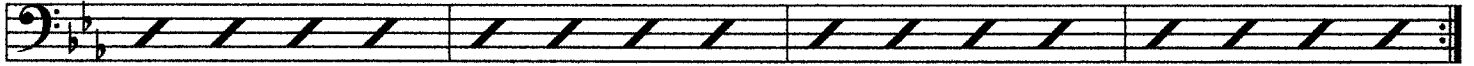
1. Dbmaj⁷



A musical staff in bass clef with a key signature of two flats (Bb, Eb) and a common time signature. The staff contains four measures of diagonal slash marks, indicating a solo section.

1. Dm5b⁷

G⁷



A musical staff in bass clef with a key signature of two flats (Bb, Eb) and a common time signature. The staff contains four measures of diagonal slash marks, indicating a solo section.

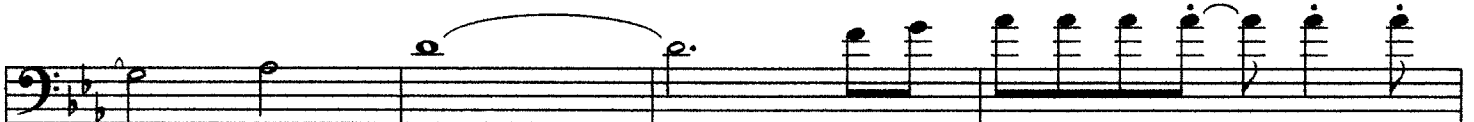
2.

(on cue)



A musical staff in bass clef with a key signature of two flats (Bb, Eb) and a common time signature. It contains a melodic line starting with a quarter rest, followed by a half note G2, a quarter note F2, a quarter note E2, a quarter note D2, a quarter note C2, a half note B1, and a half note A1. The notes are beamed together in pairs.

(every last chorus only)

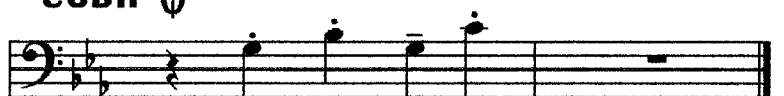


A musical staff in bass clef with a key signature of two flats (Bb, Eb) and a common time signature. It contains a melodic line starting with a quarter note G2, a quarter note F2, a quarter note E2, a quarter note D2, a quarter note C2, a half note B1, and a half note A1. The notes are beamed together in pairs.

CODA ⊕



A musical staff in bass clef with a key signature of two flats (Bb, Eb) and a common time signature. It contains a whole rest.



A musical staff in bass clef with a key signature of two flats (Bb, Eb) and a common time signature. It contains a melodic line starting with a quarter rest, followed by a half note G2, a quarter note F2, a quarter note E2, a quarter note D2, a quarter note C2, a half note B1, and a half note A1. The notes are beamed together in pairs.