

SPRING IN BOSTON

Latin Rock

Milan Svoboda

The first measure of the bass line in 4/4 time, starting with a quarter note G2, followed by eighth notes A2, B2, and C3, and ending with a quarter note D3.

The first ending of the bass line, marked with a first ending symbol (a box with '1.' and a double bar line). It continues the melodic line from the first measure, ending with a quarter note G2.

The second ending of the bass line, marked with a second ending symbol (a box with '2.' and a double bar line). It continues the melodic line from the first measure, ending with a quarter note G2. Below the staff, there are four measures of hatched lines representing chords: Fm7, Em7, Abm7, and Gm7.

The third ending of the bass line, marked with a third ending symbol (a box with '3.' and a double bar line). It continues the melodic line from the first measure, ending with a quarter note G2. Below the staff, there are four measures of hatched lines representing chords: Bm5b7, Bb7, Dbm7, and G7b9.

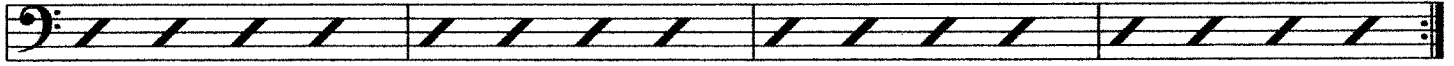
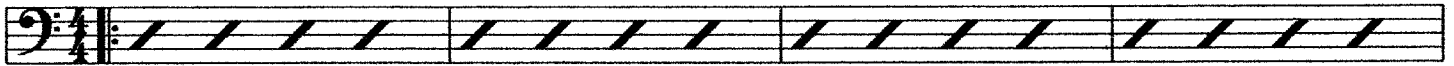
The fourth ending of the bass line, marked with a fourth ending symbol (a box with '4.' and a double bar line). It continues the melodic line from the first measure, ending with a quarter note G2. Below the staff, there are four measures of hatched lines representing chords: Bm5b7, Bb7, Dbm7, and G7b9. The word "(special)" is written below the staff.

The fifth ending of the bass line, marked with a fifth ending symbol (a box with '5.' and a double bar line). It continues the melodic line from the first measure, ending with a quarter note G2.

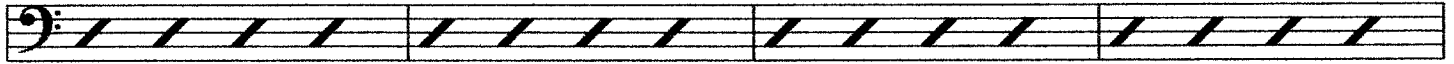
The sixth ending of the bass line, marked with a sixth ending symbol (a box with '6.' and a double bar line). It continues the melodic line from the first measure, ending with a quarter note G2.

SOLOS:

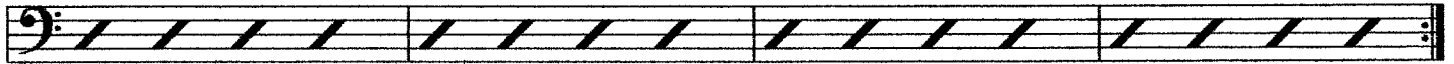
E C⁹



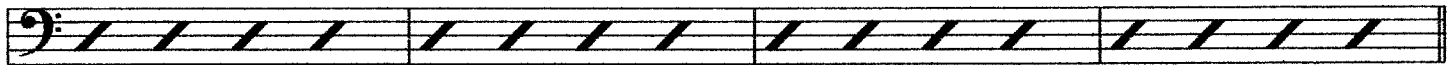
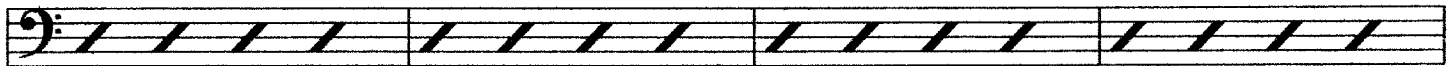
F Fm⁷ Em⁷ A^bm⁷ Gm⁷



Bm⁷ B^{b7} D^bm⁷ G^{7b9}



G C⁹



CODA

