

222.

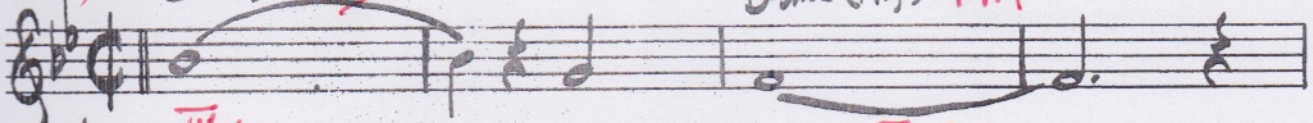
# LOVE FOR SALE

COLE PORTER

(B<sup>b</sup>/B<sup>mi</sup>)

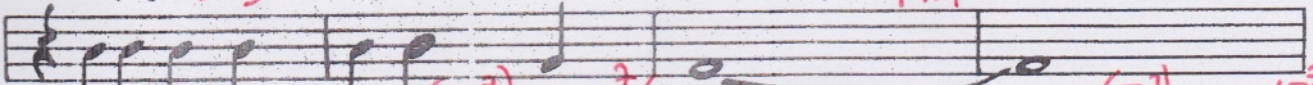
E<sup>b</sup>Maj<sup>7</sup> IV<sup>Δ</sup> LYD

B<sup>b</sup>mi (Maj<sup>7</sup>) I-A MM



E<sup>b</sup>Maj<sup>7</sup> IV<sup>Δ</sup> LYD

B<sup>b</sup>mi (Maj<sup>7</sup>) I-A MM

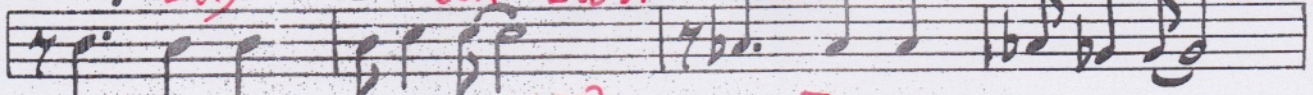


E<sup>b</sup>Maj<sup>7</sup> IV<sup>Δ</sup> LYD

E<sup>b</sup>mi<sup>7</sup> (II<sup>-7</sup>) DOR D<sup>7</sup> sub V<sup>7</sup>/bIII LYD b7

D<sup>b</sup> bIII JON

D<sup>b</sup>mi<sup>7</sup> (II<sup>-7</sup>) DOR G<sup>b</sup>7 sub V<sup>7</sup>/V LYD b7



C<sup>ø</sup> II<sup>ø</sup> LOKR

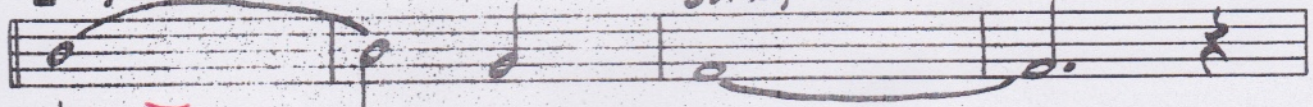
B<sup>7</sup> (F<sup>1</sup>) sub V<sup>7</sup> LYD b7

B<sup>b</sup>mi I-AIOL (MM)



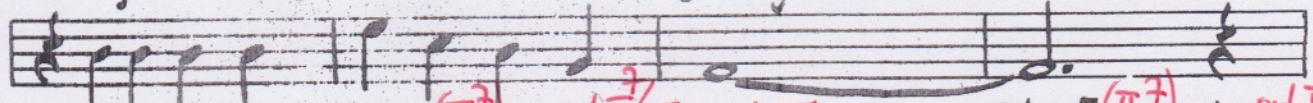
E<sup>b</sup>Maj<sup>7</sup> IV<sup>Δ</sup> LYD

B<sup>b</sup>Maj<sup>7</sup> I-A JON



E<sup>b</sup>Maj<sup>7</sup> IV<sup>Δ</sup> LYD

B<sup>b</sup>Maj<sup>7</sup> I-A JON

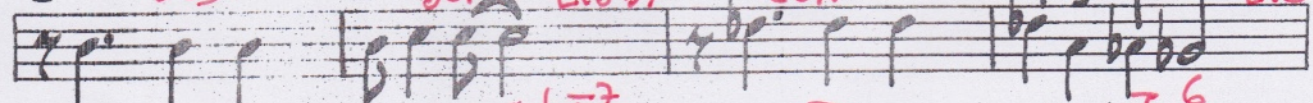


E<sup>b</sup> IV LYD

E<sup>b</sup>mi<sup>7</sup> (II<sup>-7</sup>) DOR D<sup>7</sup> sub V<sup>7</sup>/bIII LYD b7

D<sup>b</sup> bIII JON

D<sup>b</sup>mi<sup>7</sup> (II<sup>-7</sup>) DOR G<sup>b</sup>7 sub V<sup>7</sup>/V LYD b7

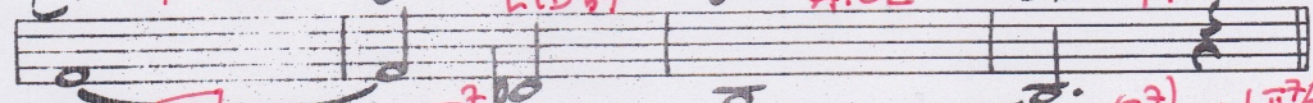


C<sup>ø</sup> II<sup>ø</sup> LOKR

B<sup>7</sup> (F<sup>1</sup>) sub V<sup>7</sup> LYD b7

B<sup>b</sup>mi I-AIOL

B<sup>b</sup>mi<sup>6</sup> I-6 MM



E<sup>b</sup>mi<sup>7</sup> IV<sup>-7</sup> II<sup>-7</sup>

A<sup>b</sup>7 IV MIXO

D<sup>b</sup> I JON

E<sup>b</sup>mi<sup>7</sup> II<sup>-7</sup> DOR

F<sup>mi</sup>7 (II<sup>-7</sup>) JOR

E<sup>7</sup> sub V<sup>7</sup>/II LYD b7



(MODUL.)

- LOVE FOR SALE PG 2 -

223.

Handwritten musical notation with guitar chord diagrams and scale names. The notation includes:

- Staff 1: Ebmi7 II-7 DOR, Ab7 V7 MIXO, Db I JON, Ebmi7 II-7 DOR, Fmi7 III-7 FRIG, Gbmaj7 IVA LYD
- Staff 2: Fmi7 (II-7) DOR, Bb7 V7/II MM5, B7 sub V/VI LYD b7, Bb7 V7/II MM5, Ebmi6 II-7 DOR (MM), Ebmi7 II-7 DOR
- Staff 3: Gø7 (IIø) LOKR, C7 (V7) MH5, Gø7 (IIø) LOKR, C7 (V7) MH5, F#mi7 (II-7) DOR, B7 (sub V) LYD b7, Fø7 (IIø) LOKR, E7 sub V/IV LYD b7
- Staff 4: EbMaj7 IVA LYD, Bbmi (Maj7) I-Δ MM
- Staff 5: EbMaj7 IVA LYD, BbMaj7 IA JON
- Staff 6: Eb IV LYD, Ebmi7 (II-7) DOR, sub V/III LYD b7, Db bIII JON, Dbmi7 (II-7) DOR, Gb7 sub V/II LYD b7
- Staff 7: Cø7 IIø LOKR, B7 sub V LYD b7, Bbmi I-Δ OL (MM)

Three empty musical staves for additional notation.